



SAMUEL & SONS
SUMMER/ÉTÉ 2022



Julienne Collection
Inspired by the elegant and refined
ribbons used in French
couture.



French Grosgrain Collection
Second Edition

A collection of the most refined French grosgrain ribbons offered in an extensive selection of shades, a variety of widths and in a tailored piping.

SAMUEL & SONS
ESSENTIALS



SAMUEL & SONS
ESSENTIALS



Françoise Collection

Françoise is a timeless collection of lustrous cords and fine borders offered in an extensive palette of 59 shades.

SAMUEL & SONS
ESSENTIALS



Shown from left to right:
1" *Françoise Border*/
Galon 25 mm in Latte, Honey and Custard

IT'S ALL ABOUT THE ESSENTIALS

In today's fast-paced and ever-shifting landscape, designers are looking for ways to streamline their process, while still being able to offer their clients a wide variety of styles to choose from. Samuel & Sons is pleased to debut a brand-new way to work, tailored specially to these needs.

Our Essentials Collection was conceived with the idea of offering designers the full breadth and depth of Samuel & Sons basics, to take with you wherever you go. The range allows for something suitable in every scenario, and its potential is limited only by your imagination. These compact fan decks, organized by color and housed in a sleek box, were crafted with designers' workflow in mind, making them the ideal tool for everyday sourcing and scheming, whether in the office or on-site. The box is designed to fit five different collections at a time, in order to actively suit the needs of you and your clients. We're excited to share these innovations with you in a passementerie resource you'll love using every day. Remember, great things come in small packages!

This season, Samuel & Sons is pleased to debut four distinct collections of passementerie: **Astrid**, **French Grosgrain**, **Françoise** and **Semma**, each intended to enrich interiors with ambiance and luxury.

Dans le paysage actuel en constante évolution, les designers cherchent des moyens de rationaliser leur processus, tout en étant en mesure d'offrir à leurs clients une grande variété de styles parmi lesquels ils peuvent choisir. Samuel & Sons est heureux de lancer une nouvelle façon de travailler, spécialement adaptée à ces besoins. Notre collection Essentials a été conçue dans le but d'offrir aux designers toute l'étendue et la profondeur des bases de Samuel & Sons, qui peuvent être vous accompagner partout. La gamme offre quelque chose qui convient à tous les scénarios, et son potentiel est limité uniquement par votre imagination. Ces échantillons compacts, organisés par couleur et hébergés dans une boîte élégante, ont été conçus en tenant compte du flux de travail des designers, ce qui en fait l'outil idéal pour l'approvisionnement et les conceptions au quotidien, que ce soit au bureau ou chez les clients. La boîte est conçue pour s'adapter à cinq collections différentes à la fois afin de répondre activement à vos besoins et à ceux de vos clients. Nous sommes ravis de partager ces innovations avec vous dans une ressource en passementerie dont vous ne pourrez plus vous passer au quotidien. N'oubliez pas que c'est dans les petits pots que l'on trouve les meilleurs onguents !

Cette saison, Samuel & Sons est fière de lancer quatre collections distinctes de passementeries: Astrid, French Grosgrain, Françoise et Semma, qui ont chacune pour but d'apporter aux espaces intérieurs de la chaleur, une ambiance particulière, et une impression de luxe.

CONTENTS:

French Grosgrain 6-9 / *Semma* 10-15 / *Françoise* 16-19 / *Astrid* 20-23 / *Athina* 24-25

Cavalleria 26-27 / *Cortina* 28-29 / *Julienne* 30-31 / *Technical Specs* 32-35



*Clockwise from top left:
 2" French Grosgrain Ribbon/
 French Gros Grain in Ginger, Rose and Shell
 1.5" French Grosgrain Ribbon/
 French Gros Grain in Tangelo and Magenta*

FRENCH GROSGRAIN COLLECTION

A collection of the most refined French Grosgrain ribbons offered in an extensive selection of shades, a variety of widths, and in a tailored piping.

Une collection de rubans gros grain français parmi les plus raffinés proposés dans un vaste choix de nuances et de largeurs, avec passepoil sur mesure.



*Shown from top to bottom:
 5/8" French Grosgrain Ribbon/
 French Gros Grain in Bubblegum,
 1.5" French Grosgrain Ribbon/
 French Gros Grain in Pimento,
 and 2" French Grosgrain Ribbon/
 French Gros Grain in Fuchsia*



Constructed from a semi-lustrous yarn, the French Grosgrain Collection's 5 patterns, each available in all colors, will offer designers over 370 possibilities to choose from with unlimited combinations.

Réalisés à partir d'un fil semi-lustré, les cinq motifs de la collection French Grosgrain sont disponibles dans toutes les couleurs pour offrir plus de 370 possibilités avec des combinaisons illimitées aux designers.

Shown from right to left: 2" French Grosgrain Ribbon/French Gros Grain in Rose, Tangelo, Salmon, Magenta, Peony, and Shell, 1/4" French Grosgrain Piping/Passepoil and 1.5" French Grosgrain Ribbon/French Gros Grain in Maiz, 1.5" French Grosgrain Ribbon/French Gros Grain in Pearl, 5/8" French Grosgrain Ribbon/French Gros Grain in Bubblegum, 1.5" French Grosgrain Ribbon/French Gros Grain in Pimento, and 2" French Grosgrain Ribbon/French Gros Grain in Fuchsia, 1/4" French Grosgrain Piping/Passepoil in Peacock, 2" French Grosgrain Ribbon/French Gros Grain in Lagoon, 1.5" French Grosgrain Ribbon/French Gros Grain in Peacock and Julienne 2-Tone Double Welting/Double corde bicolore 10 mm in Verdigris, 1.5" French Grosgrain Ribbon/French Gros Grain in Pearl, 2" French Grosgrain Ribbon/French Gros Grain in Maize, and 1.5" French Grosgrain Ribbon/French Gros Grain in Sunflower.



*Elora Embroidered Border/
Galon brodé Elora in Green Tea*



*Elora Embroidered Border/
Galon brodé Elora in Green Tea*

SEMMA COLLECTION

Semma is a curated collection of modern borders that strikes the balance between natural and chic.

Semma est une collection soigneusement conçue de galons modernes qui trouvent leur équilibre entre naturel et chic.



*Shown on the opposite page from right to left:
Kaia Embroidered Border/
Galon brodé Kaia in Blue Sky
and Françoise Metallic Cord with Tape/
Câblé sur pied métallisé in Silver*

***Kaia Embroidered Border/**
Galon brodé Kaia in Golden Light*





*Shown from right to left:
Mila Embroidered Border/
Galon brodé Mila in Flax and Stream
and Terrace Cord with Tape/
Câblé sur pied in Surf*

*Shown on the opposite page:
Mila Embroidered Border/
Galon brodé Mila in Stream*



Mila Embroidered Border is 3” wide and features a graceful series of mirror-image curves rendered in embroidery with a crimped cording silhouette.

Galon brodé Mila: large de 3 po (76 mm), il présente une série gracieuse de courbes en miroir réalisées en broderie avec une silhouette en cordage sertie.

- Marisa Gutmacher
Executive Design Director



*1" Françoise Border/
Galon 25 mm in Pearl, Cream,
Eggshell, Linen and Onyx*

FRANÇOISE COLLECTION

Françoise is a timeless collection of lustrous cords and fine borders offered in a broad palette of colors.

Françoise est une collection intemporelle de cordons lustrés et de bordures fines proposés dans une vaste palette de couleurs.



*1" Françoise Border/
Galon 25 mm in Terra*

*Françoise Metallic Cord with Tape/
Câblé sur pied métallisé in Antique Gold*



Françoise includes a selection of 5 glistening metallics ranging from White Gold to Antique Silver in which various fibers combine with metal yarns to achieve the ideal level of sheen.

Françoise comprend une sélection de cinq métalliques chatoyants allant de l'or blanc à l'argent ancien dans lesquels diverses fibres se combinent avec des fils métalliques pour atteindre le niveau idéal de brillance.

*1.5" Françoise Metallic Border/
Galon métallisé 38 mm in Antique Gold*



*Astrid Bullion Fringe/
Frange moulinée in Slate Blue*



*Shown from back to front:
Astrid Cord with Tape/Câblé sur pied
and Astrid Bullion Fringe/
Frange moulinée in Rain and Jewel*



ASTRID COLLECTION

Astrid is a collection of beautifully woven, mercerized cotton bullion fringes and cords with tape in an array of 12 sophisticated color combinations.

Astrid est une collection de cordons et de franges moulinées en coton mercerisé câblé sur pied joliment tissés proposés dans une gamme de 12 combinaisons de couleurs sophistiquées.

To achieve a superior quality bullion and cord, we opted to weave this collection in mercerized cotton because it is more lustrous, stronger, and is able to achieve greater color saturation than conventional cotton.

Pour obtenir une frange moulinée et un cordon de qualité supérieure, nous avons choisi de tisser cette collection avec du coton mercerisé car il est plus lustré, présente une résistance plus forte, et peut atteindre une saturation de couleur plus intense que le coton conventionnel.

*- Marisa Gutmacher
Executive Design Director*



*Shown from right to left:
Astrid Cord with Tape/Câblé sur pied and
Astrid Bullion Fringe/Frange moulinée in Rain,
Antique Celadon, Sunset, Larkspur, Jewel, Basil,
Cornsilk, Crimson, Slate Blue, Framboise, Tea
Rose and Pearl.*



*Shown from top to bottom:
Athina Embroidered Border/
Galon brodé Athina in Marble, Granite,
Lapis, Sandstone and Onyx.*



*From top to bottom:
Athina Embroidered Border/
Galon brodé Athina in Onyx and Granite*

ATHINA COLLECTION

Athina is a sophisticated, visually dimensional, strié embroidered felt border depicting a classical Greek Key.

Athina est un galon en feutre brodé, chic et dimensionnel, représentant une clé grecque classique.



CAVALLERIA COLLECTION

Cavalleria is an exceptional collection of strié linen and vegan leather borders featuring innovative pairings of nailheads and embroidery.

Cavalleria est une collection exceptionnelle en lin strié avec des galons en faux cuir qui propose des associations innovantes de têtes de clous et de broderies.



Opposite Page:
Tori Studded Border/Galon clouté
 Tori in Palomino and Cremello

Shown from left to right: **Lucente Ball Chain with Tape**/
 Câblé perles in Antique Silver
and Castilian Hammered Nailhead Border/Galon à clous martelés
 Castilian in Roan



*Shown from top to bottom:
Cortina Faux Fur Embroidered
Border/Galon brodé imitation
fourrure in Camel and Winter White*

CORTINA COLLECTION

Cortina is a sumptuous collection of opulent faux fur embroidered, appliqué borders and brush fringe. Inspired by some of the most sought after resorts in the northern Italian town of Cortina d'Ampezzo, this curated collection features 3 border patterns and a coordinating, dense pile brush fringe.

Cortina est une somptueuse collection de fausse fourrure opulente brodée, de galons d'appliqués et de franges brosses. Inspirée par certaines des stations balnéaires les plus prisées de la ville de Cortina d'Ampezzo, au nord de l'Italie, cette collection soigneusement conçue comprend trois motifs de galon et une frange brosse dense assortie.



*Shown from back to front:
Cortina Faux Fur Appliqué Border/
Galon d'application imitation
fourrure in Sable
and Cortina Faux Fur Fringe/
Frangé imitation fourrure in Camel*

Shown from top to bottom:
Julienne Double Welting/
Double corde in Tangerine,
Tulip, Petrol, Forsythia,
Raspberry, Pool, Lavender,
and Parsley



JULIENNE COLLECTION

Julienne is composed of a finely woven cotton piping and double welting in a broad spectrum of colors.

Julienne est composée d'un passepoil en coton finement tissé et d'une double trépointe dans un large éventail de couleurs.



French Grosgrain II Collection

977-44969 1/4" (5 mm)
1/4" French Grosgrain Piping/
Passepoil
 56% CO; 44% VI

977-44930 5/8" (15 mm)
5/8" French Grosgrain Ribbon/
French Gros Grain
 56% CO; 44% VI

977-44931 1" (25 mm)
1" French Grosgrain Ribbon/
French Gros Grain
 56% CO; 44% VI

977-44932 1.5" (38 mm)
1.5" French Grosgrain Ribbon/
French Gros Grain
 56% CO; 44% VI

977-44933 2" (50 mm)
2" French Grosgrain Ribbon/
French Gros Grain
 56% CO; 44% VI

*Nouvelles Couleurs: Aegean, Blueberry,
 Cerulean, Crimson, Eggplant, Emerald,
 Forest Green, Ginger, Juniper, Magenta, Olive,
 Patina, Rose, Royal Blue, Seafoam, Shell,
 Tangelo, Topaz*

Françoise Collection

CT-60055 1/4" (5 mm)
Françoise Cord with Tape/
Câblé sur pied
 41% PC, 29% VI, 25% AC, 5% PES
Colours: Available in 54 colours

CT-60056 1/4" (5 mm)
Françoise Metallic Cord with Tape/
Câblé sur pied métallisé
 42% VI, 36% PC, 14% AC, 8% PES
*Colours: Antique Gold, Antique Silver,
 Gold, Silver, White Gold*

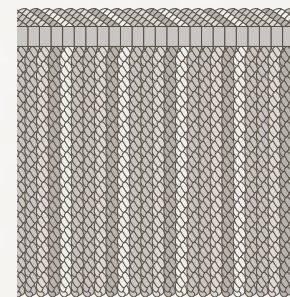
BT-60057 1" (25 mm)
1" Françoise Border/
Galon 25 mm
 100% AC
Colours: Available in 54 colours

BT-60058 1" (25 mm)
1" Françoise Metallic Border/
Galon métallisé 25 mm
 68% PC, 26% VI, 6% PES
*Colours: Antique Gold, Antique Silver, Gold,
 Silver, White Gold*

BT-60059 1.5" (38 mm)
1.5" Françoise Border/
Galon 38 mm
 100% AC
Colours: Available in 54 colours

BT-60060 1.5" (38 mm)
1.5" (38mm) Françoise Metallic Border/
Galon métallisé 38 mm
 68% PC, 26% VI, 6% PES
*Colours: Antique Gold, Antique Silver, Gold,
 Silver, White Gold*

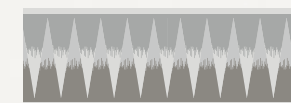
Astrid Collection



BU-60053 8" (20.5 cm)
Astrid Bullion Fringe/
Frange moulinée
 Repeat / Raccord : 1.75" (44 mm)
 99% CO, 1% PC
*Colours: Antique Celadon, Basil, Cornsilk,
 Crimson, Framboise, Jewel, Larkspur, Pearl,
 Rain, Slate Blue, Sunset, Tea Rose*

CT-60054 1/4" (5 mm)
Astrid Cord with Tape/
Câblé sur pied
 80% CO, 19% PES, 1% NY
*Colours: Antique Celadon, Basil, Cornsilk,
 Crimson, Framboise, Jewel, Larkspur, Pearl,
 Rain, Slate Blue, Sunset, Tea Rose*

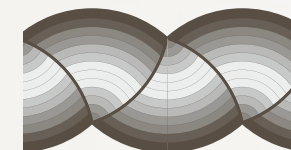
Semma Collection



BT-60122 2.75" (70 mm)
Kaia Embroidered Border/
Galon brodé Kaia
 Repeat / Raccord : 1" (25 mm)
 45% LI, 25% VI, 20% CO, 10% SPUN PES
Colours: Blue Sky, Golden Light, Opaline



BT-60123 3" (76 mm)
Mila Embroidered Border/
Galon brodé Mila
 Repeat / Raccord : 2" (51 mm)
 65% LI, 20% CO, 10% SPUN PES, 5% PC
Colours: Stream, Flax



BT-60121 4" (10 cm)
Elora Embroidered Border/
Galon brodé Elora
 Repeat / Raccord : 3.75" (95 mm)
 47% VI, 23% LI, 17% CO, 13% SPUN PES
Colours: Green Tea, Deep Sea



Cavalleria Collection

981-53991 1/4" (5 mm)
Lucente Ball Chain with Tape/
Câblé perles
 85% ME/MF, 15% AC
Colours : Antique Gold, Antique Silver

CT-59931 1/4" (6 mm)
Cavalleria Velvet Piping/
Passepoil velours Cavalleria
 58% PES, 40% CO, 2% Aluminum
Colours : Black

GB-59937 1/2" (13 mm)
Senna Studded Gimp/
Lézarde clouté Senna
 Repeat / Raccord : 13/16" (21 mm)
 67% Microfiber LH, 33% Brass
Colours : Black, Dark Bay

GB-59935 5/8" (16 mm)
Noma Studded Gimp/
Lézarde clouté Noma
 74% Brass, 18% LI, 8% Spun VI
Colours : Dapple, Olive, Palomino, Perlino, Terra

BT-59934 3/4" (19 mm)
Mérens Nailhead Border/
Galon à clous Mérens
 Repeat / Raccord : 1.25" (32 mm)
 60% Brass, 40% Microfiber LH
Colours : Black, Dark Bay

BT-59932 3/4" (19 mm)
Esperia Nailhead Border/
Galon à clous Esperia
 Repeat / Raccord : 1.4" (35 mm)
 51% Brass, 49% Microfiber LH
Colours : Black, Dark Bay, Grullo

BT-59927 1.8" (46 mm)
Ardennais Studded Border/
Galon clouté Ardennais
 Repeat / Raccord : 1.2" (30 mm)
 72% Microfiber LH, 28% Brass
Colours : Black

BT-59933 2" (51 mm)
Lusitano Studded Border/
Galon clouté Lusitano
 Repeat / Raccord : 2.8" (71 mm)
 59% Microfiber LH, 23% Brass, 16% RY, 2% PES
Colours : Black, Dark Bay

BT-59939 2.2" (56 mm)
Tori Studded Border/
Galon clouté Tori
 42% LI, 38% CO, 20% ME Studs
Colours : Cremello, Palomino

BT-59930 2.25" (57 mm)
Castilian Hammered Nailhead Border/
Galon à clous martelés Castilian
 Repeat / Raccord : 3.95" (10 cm)
 88% ME, 12% LI
Colours : Roan

BT-59928 2.55" (65 mm)
Campolian 2-Tone Border/
Galon bicolore Campolian
 Repeat / Raccord : 3.95" (10 cm)
 61% Microfiber LH, 26% RY, 11% Brass, 2% PES
Colours : Black, Cremello

BT-59942 2.7" (68 mm)
Catria Studded Border/
Galon clouté Catria
 Repeat / Raccord : 1.4" (35 mm)
 56% Microfiber LH, 30% Brass, 10% RY, 4% PES
Colours : Black, Cremello

BT-59936 2.95" (75 mm)
Percheron Studded Border/
Galon clouté Percheron
 Repeat / Raccord : 7.75" (19.5 cm)
 59% LI, 38% Brass, 3% Spun VI
Colours : Buckskin, Dapple, Teal

BT-59938 2.95" (75 mm)
Sorraia Studded Border/
Galon clouté Sorraia
 Repeat / Raccord : 6.65" (17 cm)
 49% Microfiber LH, 36% Brass, 8% RY, 7% PES
Colours : Black, Dark Bay

BT-59929 3" (76 mm)
Caspian Studded Border/
Galon clouté Caspian
 Repeat / Raccord : 4.25" (11 cm)
 56% Microfiber LH, 35% Brass, 8% RY, 1% PES
Colours : Black, Dark Bay

Athina Collection



BT-59900 3.5" (89 mm)
Athina Embroidered Border/
Galon brodé
 Repeat / Raccord : 3.875" (98 mm)
 54% WO, 31% PES, 10% NY, 5% VI
Colours : Granite, Lapis, Marble, Onyx, Sandstone



Cortina Collection

BR-59994 1.5" (38 mm)
Cortina Faux Fur Fringe/
Frangé imitation fourrure
 Repeat / Raccord : N/A
 70% PC, 30% PES
Colours : Camel, Chestnut, Obsidian, Winter White

BT-59995 2" (51 mm)
Cortina Faux Fur Geometric Border/
Galon géométrique imitation fourrure
 Repeat / Raccord : 2" (51 mm)
 90% PES, 10% PU
Colours : Sable

BT-59993 3" (76 mm)
Cortina Faux Fur Embroidered Border/
Galon brodé imitation fourrure
 Repeat / Raccord : 2.9" (73 mm)
 100% PES
Colours : Camel, Obsidian, Winter White

BT-59992 3" (76 mm)
Cortina Faux Fur Applique Border/
Galon d'application imitation fourrure
 Repeat / Raccord : 6" (15 cm)
 88% PES, 12% PU
Colours : Sable

Julienne Collection

CT-59790 1/4" (5 mm)
1/4" (5 mm) Julienne Metallic Piping/
Passepoil métallisé
 46% CO, 37% ME, 20% PES
Colours : Antique Gold, Antique Silver, Brass, Bronze, Copper, Gold Dust, Gold Leaf, Rose Gold, Silver Leaf, Venetian Bronze, White Gold

CT-59789 1/4" (5 mm)
1/4" (5 mm) Julienne Piping/
Passepoil
 75% CO, 24% Spun VI, 1% PES
Colours : 156 Available

GB-59872 3/8" (10 mm)
3/8" (10 mm) Julienne 2-Tone Double Welting/
Double corde bicolore
 100% CO
Colours : Alabaster, Carbon, Ciel, Cilantro, Cobalt, Fraise, Gold Finch, Harvest, Meteor, Midnight, Verdigris, Walnut

GB-59795 3/8" (10 mm)
3/8" (10 mm) Julienne Metallic Double Welting/
Double corde métallisé
 63% CO, 28% ME, 9% PES
Colours : Antique Gold, Antique Silver, Brass, Bronze, Copper, Gold Dust, Gold Leaf, Rose Gold, Silver Leaf, Venetian Bronze, White Gold

GB-59791 3/8" (10 mm)
3/8" (10 mm) Julienne Double Welting/
Double corde
 86% CO, 13% Spun VI, 1% PES
Colours : 156 Available



USA 212.704.8000
EUROPE +44.020.7351.5153
SAMUELANDSONS.COM



A step ahead



SAMUEL & SONS IS TRIM.
samuelandsons.com

